



## **[WEEKLY NEWSLETTER EQUITY]**

**09/APR/2018**

## MARKET OUTLOOK

- ❖ The market was RANGE BOUND during the week. The Sensex was UP 658.29 points while the Nifty was UP 2.15 % during the week. Nifty was in the range of 10121-10376.
- ❖ Across the US markets, the Dow Jones industrial average fell 572.46 points to 23,932.76, while the S&P 500 declined 2.2 percent to 2,604.47 dragged by industrials and the Nasdaq composite dropped 2.3 percent to close at 6,915.11, after the US Federal Reserve indicated that it would continue hiking rates this year. For the week, Dow Jones was down 0.7 percent while the S&P500 slipped 1.4 percent this week, as volatility continued in trade. The Nasdaq composite was down 2.1 percent. The volatility was further aided by the US and China after the two countries escalated the trade war with new tariffs. US President Donald Trump threatened more levies on Thursday, and considered USD 100 billion in additional tariffs against China, after it announced fresh tariffs on 106 US products on Wednesday. US trade deficit widened to USD 57.6 billion in February from a revised USD 56.7 billion in January. Economists had expected the trade deficit to widen to USD 56.8 billion from USD 56.6 billion originally reported for the previous month, a statement by SMC Global said.
- ❖ For the week, the Sensex was UP 658.29 points while the Nifty was UP 2.15 % during the week.

## NEWS AFFECTING INDIAN MARKETS

- ❖ Indian firms should leverage on technologies, artificial intelligence to leapfrog economy: NITI Aayog CEO
- ❖ India to take up steel, aluminum import tariff hike with US officials next week
- ❖ Govt likely to push mega PSU insurers merger to next year
- ❖ India bans imports of hormone oxytocin to halt misuse in livestock industry

## MARKET PERFORMANCE

### NIFTY GAINERS

COMPANY NAME	CURRENT	PREV. CLOSE(RS)	CHANG.(RS)	CHAG.(%)
LUPIN	808.95	786.70	22.25	2.83
BPCL	433.20	422.45	10.75	2.54
TITAN	938.40	920.05	18.35	1.99
HINDPETRO	354.10	348.35	5.75	1.65
ADANI PORTS	381.00	375.95	5.05	1.34

### NIFTY LOSERS

COMPANY NAME	CURRENT	PREV. CLOSE(RS)	CHANG.(RS)	CHAG.(%)
BHARTIARTL	383.95	393.90	-9.95	-2.53
INFY	1127.55	1147.55	-20.00	-1.74
VEDL	284.90	289.90	-5.00	-1.72
COALINDIA	275.05	277.80	-2.75	-0.99
HCLTECH	952.55	962.05	-9.50	-0.99

### NSE WEEKLY GAINERS

COMPANY NAME	DAY'S CLOSING PRICE (RS.)	PREVCLOSE	5 DAYS AGO (RS.)	5 DAYS RETURN (%)
KSS LTD	0.30	0.15	0.15	100.00
MACPOWER CNC MACHINES LTD.	256.95	150.00	106.95	71.30
DHARANI SUGARS	22.70	14.10	8.60	60.99
ADITYABIRLAMONEY	79.75	50.50	29.25	57.92
TARMAT LTD	60.40	39.25	21.15	53.89

## SECTORIAL INDICES

INDEX	28-MAR-18	06-APR-18	CHANGE	% RETURN
NIFTY 50	10113.70	10331.60	217.90	2.15
NIFTY NEXT 50	28545.25	29991.55	1446.30	5.07
NIFTY IT	12511.55	12603.35	91.80	0.73
NIFTY BANK	24263.35	24873.15	609.80	2.51
INDIA VIX	15.76	14.75	-1.01	-6.41
NIFTY 100	10478.40	10750.35	271.95	2.60
NIFTY 500	8912.10	9172.05	259.95	2.92
NIFTY MID100 FREE	18757.00	19519.25	762.25	4.06
NIFTY MIDCAP 50	4975.30	5246.60	271.30	5.45
NIFTY PHARMA	8358.05	8772.40	414.35	4.96
NIFTY INFRA	3328.70	3392.40	63.70	1.91
NIFTY REALTY	294.05	303.40	9.35	3.18

## DOMESTIC MARKETS

INDEX	PREV CLOSE	CURRENT CLOSE	NET CHANGE	% CHANGE
SENSEX	32968.68	33626.97	658.29	2.00
NIFTY	10113.70	10331.60	217.90	2.15
NIFTY BANK	24263.35	24873.15	609.80	2.51

## AMERICAN MARKETS

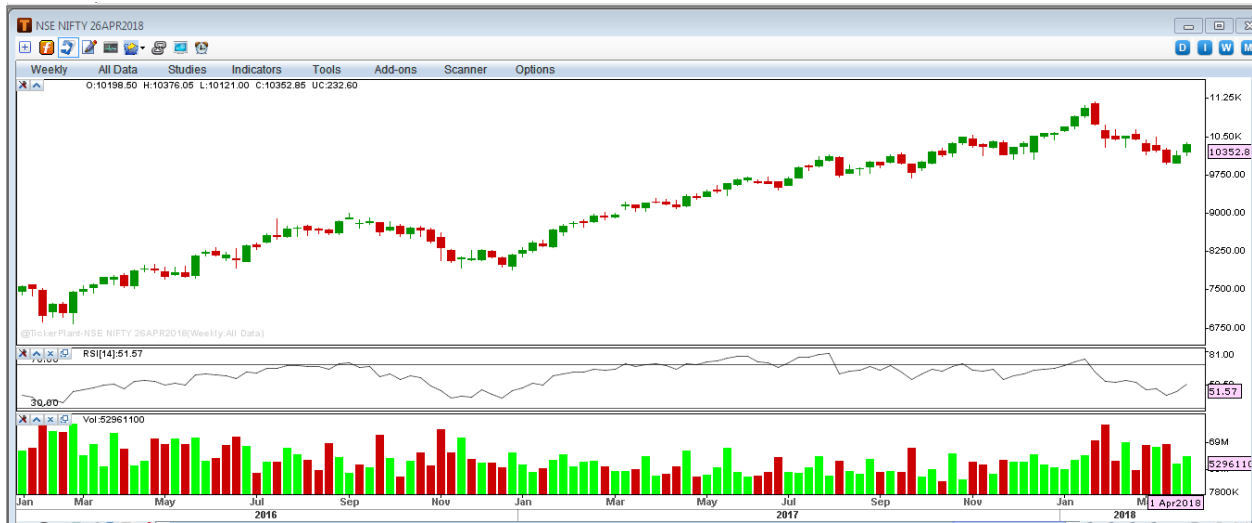
INDEX	VALUE	CHANGE	% CHANGE	DATE
DOW JONES INDUS. AVG	23,932.76	-572.46	-2.34	06-APR-2018
S&P 500	2,604.47	-58.37	-2.19	06-APR-2018
NASDAQ COMPOSITE	6,915.11	-161.44	-2.33	06-APR-2018

## EUROPEAN MARKETS

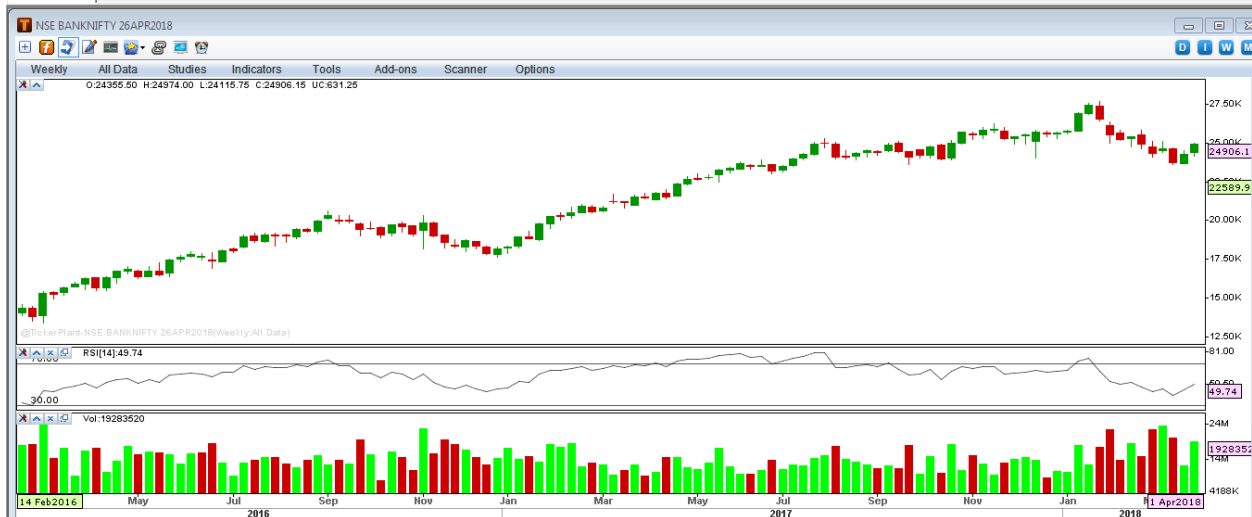
INDEX	VALUE	CHANGE	% CHANGE	DATE
FTSE 100	7,183.64	-15.86	-0.22	06-APR-2018
CAC 40	5,258.24	-18.43	-0.35	06-APR-2018
DAX	12,241.27	-63.92	-0.52	06-APR-2018

## WEEKLY CHARTS

## S&P NIFTY WEEKLY



## BANK NIFTY WEEKLY



# Disclaimer

The information and views in this report, our website & all the service we provide are believed to be reliable, but we do not accept any responsibility (or liability) for errors of fact or opinion. Users have the right to choose the product/s that suits them the most.

Sincere efforts have been made to present the right investment perspective. The information contained herein is based on analysis and up on sources that we consider reliable.

[This material is for personal information and based upon it & takes no responsibility](#)

The information given herein should be treated as only factor, while making investment decision. The report does not provide individually tailor-made investment advice. MarketMagnify Investment Advisor & Research Pvt Ltd recommends that investors independently evaluate particular investments and strategies, and encourages investors to seek the advice of a financial adviser. MarketMagnify Investment Advisor & Research Pvt Ltd shall not be responsible for any transaction conducted based on the information given in this report, which is in violation of rules and regulations of NSE and BSE.

The share price projections shown are not necessarily indicative of future price performance. The information herein, together with all estimates and forecasts, can change without notice. Analyst or any person related to MarketMagnify Investment Advisor & Research Pvt Ltd might be holding positions in the stocks recommended. It is understood that anyone who is browsing through the site has done so at his free will and does not read any views expressed as a recommendation for which either the site or its owners or anyone can be held responsible for. Any surfing and reading of the information is the acceptance of this disclaimer.

All Rights Reserved.

[Investment in Commodity and equity market has its own risks.](#)

We, however, do not vouch for the accuracy or the completeness thereof. [we are not responsible for any loss incurred whatsoever for any financial profits or loss which may arise from the recommendations above.](#) MarketMagnify Investment Advisor & Research Pvt Ltd does not purport to be an invitation or an offer to buy or sell any financial instrument. [Our Clients \(Paid Or Unpaid\), Any third party or anyone else have no rights to forward or share our calls or SMS or Report or Any Information Provided by us to/with anyone which is received directly or indirectly by them. If found so then Serious Legal Actions can be taken.](#)